

Shaw Islanders, Inc. Annual Meeting Minutes Saturday, November 05, 2011

1. The meeting was called to order at 5:12 p.m. by Shaw Islanders, Inc. board president, Lola Deane.

There were 68 community members present

Lola welcomed the community and outlined the evening events.

A thank you was extended to Gwen Yansen and Diane Wisen for preparing a timeline for memory pieces in celebration of 50 years of Shaw Islanders, Incorporated. The community was encouraged to add pictures and write their memories from the past along the timeline. Board member, Andy Schmidt, was also thanked for her beautiful decorations that created a festive atmosphere for the celebration potluck scheduled for after the meeting.

The members were reminded that the boutique was coming up soon. Money raised will go toward the play field project.

2. Brian Lynch welcomed and introduced our guests.

The first guest, San Juan County Auditor, Milene Henley, addressed where the county revenue comes from and where it goes. (**See attached document #1.**) She also noted that some of the revenue from the state is on the governor's cut list. A brief description of each fund was presented and an explanation of which funds can or cannot be used for other purposes. It was noted that some funds do not apply to Shaw Island. There was a question concerning medical services. Ms Henley explained that the funds for these services do not come out of Shaw Islander's property taxes, but we may still use the services.

Our second guest, Jamie Stephens, gave a presentation on Proposition No. 2, the San Juan County Solid Waste User Charge for Management of Solid Waste. He explained why this measure is on the ballot. The revenue for solid waste is funded through tipping fees and excise taxes based on volume of garbage processed through the system. The system has high operating and capital costs. Since volumes have declined since 2008, there has been a reduction of revenue. They are operating in the red. The Ballot measure will authorize a solid waste user fee for a period of 15 years. It establishes a charge per year based on use as either residential or commercial.

A yes vote will help stabilize the system, provide a base fund for operation, retire debt, and reduce tipping fees 44% over 2 years. Also, some services (outer island recycling) would be reestablished.

A no vote means facilities will no longer be operated by the county, service delivery methods would be a predominately route collected system including recycling. Self-haul may occur at county facilities, but not guaranteed. Fee structure for all services is matched with the cost of delivering that service (recycling, garbage, self haul, route collected). There would be no parcel based user charge. Still would charge an excise tax.

Mr. Stephen's closing statements included the fact that the user fee is new in the state so other counties are looking at San Juan County. The user fee will help stabilize the system and allow it to go forward and make corrections and do what needs to be done. The following are responses that Mr. Stephens gave during the question and answer period: The user fee would be billed through property taxes. San Juan rates are regulated, but self-haul rates are not. If Prop. 2 passes, Shaw Island's recycling will be funded through the county. If Prop. 2 doesn't pass, the current solid waste debt would be paid through the excise taxes.

3. Sharon Wooten gave us an update on our community-recycling fund. Our community has been very generous. We have enough money in the fund to carry us through September 2012 if there are no fee increases, and if we are able to continue without a container rental fee. Mr. Stephens noted that if Proposition No. 2 passes, it wouldn't go into effect until approximately near the end of 2012 so the excess in our recycling fund will still be needed to continue recycling in the interim.

4. Ron Woodard presented the playfield status report. He introduced the committee members and thanked them for their commitment to this project. He invited the community to be part of this project by making contributions as the committee kicks off a fundraising drive. The history and current status of the playfield project was reviewed. (**See attached document #2.**) Most members present were positive about this project. However, there were two community members who expressed concerns. Both Gabriel Jacobs and Jed Lengyel were concerned about the location of the playfield. (**See attached documents #3a-c.**)

Meeting was adjourned at 6:30

Respectfully Submitted,

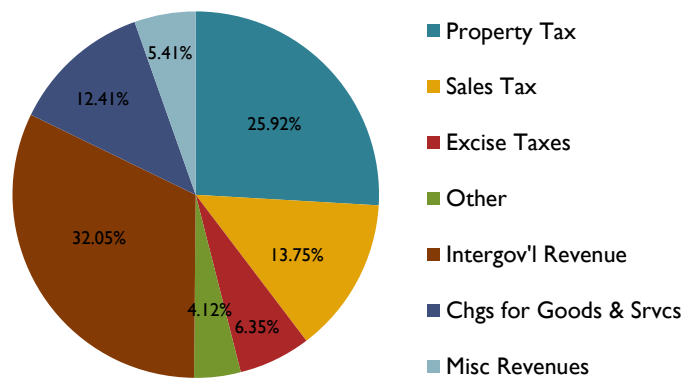
Peggy Garcia, Treasurer/Acting Secretary

San Juan County Revenues – Where does the money come from, and where does it go?

A presentation by the San Juan County Auditor
For a meeting of Shaw, Inc.
November 5, 2011

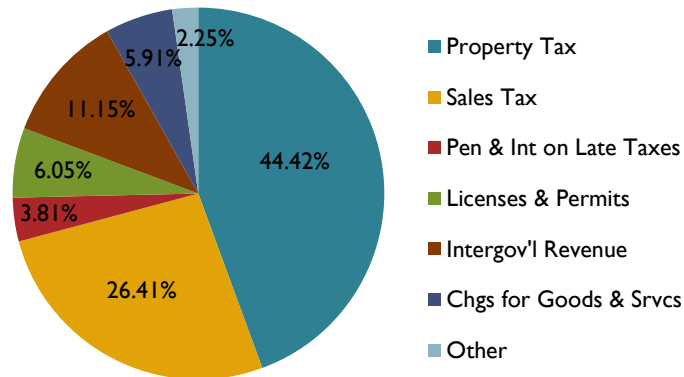
Where does the \$ come from? – County Revenue

County Revenue by Type



Where does the \$ come from? – Current Expense (General) Fund

Current Expense Revenue by Type



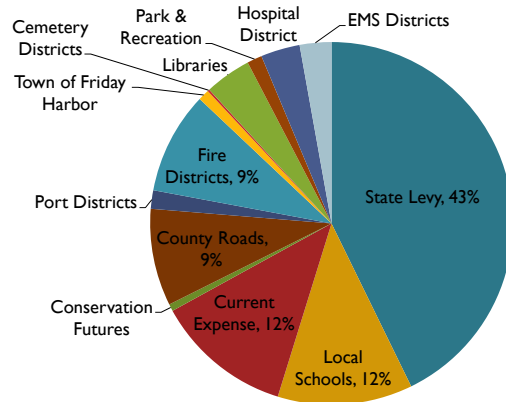
3

Where does the money go?

- A two-part question:
 - Where does the money that you pay go?
 - Where does the money that comes into the County go?

4

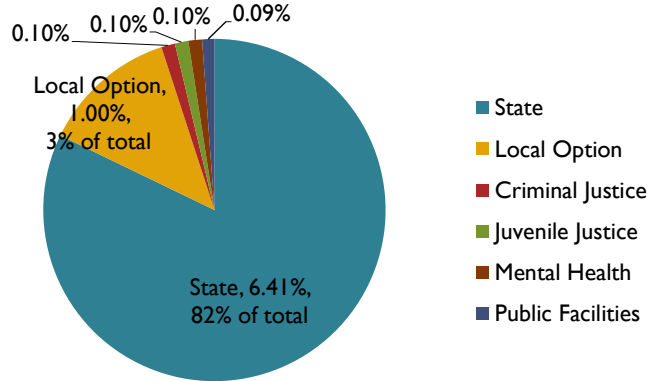
Where does the money (from you) go? – Property Taxes



5

Where does the money (from you) go? – Sales Taxes

Distribution of Sales Tax, with Rural Sales & Use Tax



6

Where does the County money go? – Funds

- Fund Accounting is used by governments and non-profits
- Intent is to facilitate transparent record-keeping
- Money is segregated by source or use
- “Funds” are all typically in one bank account
- In governments:
 - Uses of funds are often legally prescribed
 - One fund cannot benefit at the expense of another
 - Funds are legally set up and must be legally removed, if desired

7

Types of Funds in Washington (as prescribed by State’s BARS)

- General Funds: Hold generally unrestricted funds
 - Current Expense Fund
 - Grants Fund
 - Budget Stabilization Fund
- Special Revenue Funds: Hold funds whose sources are restricted to specific uses, e.g.
 - County Roads
 - Dog License Fund
 - Parks and Fair
 - Department of Emergency Management
 - Capital Improvement Fund
 - Mental Health Tax Fund

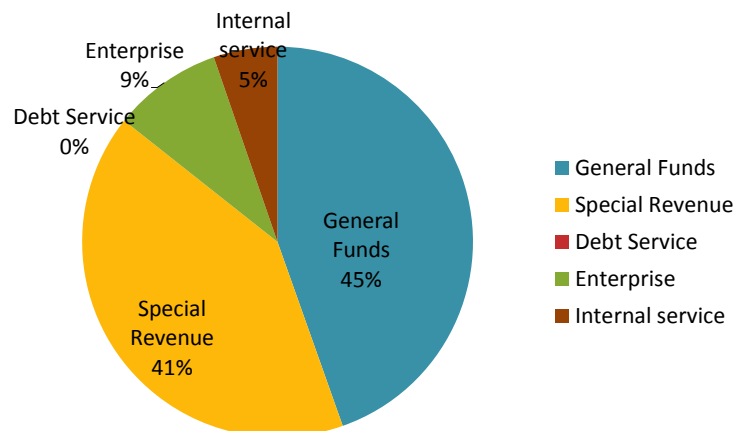
8

Types of Funds in Washington

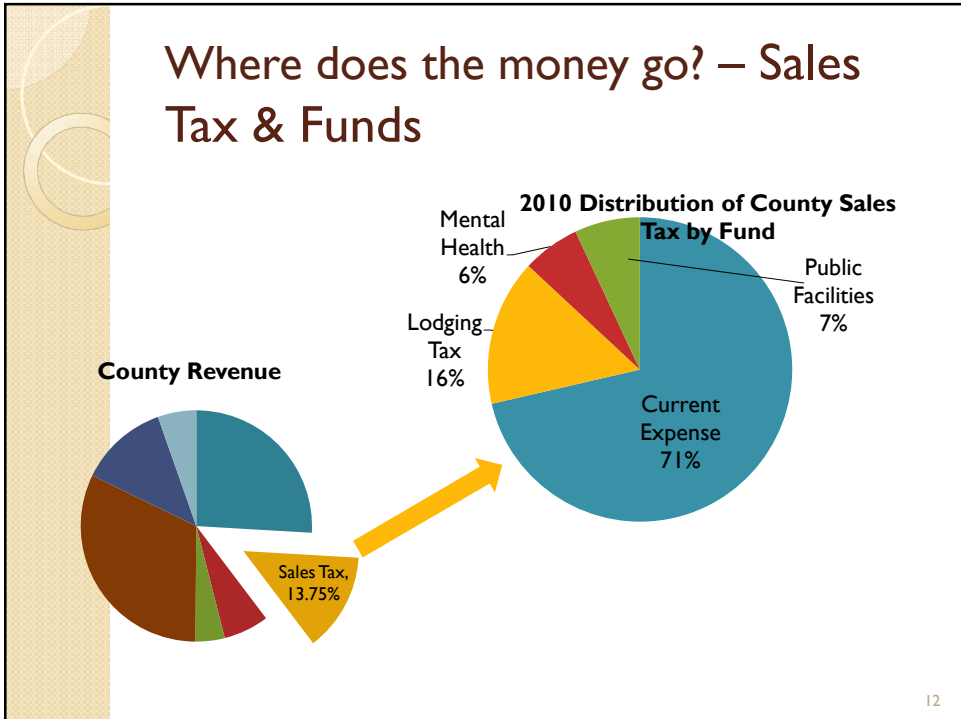
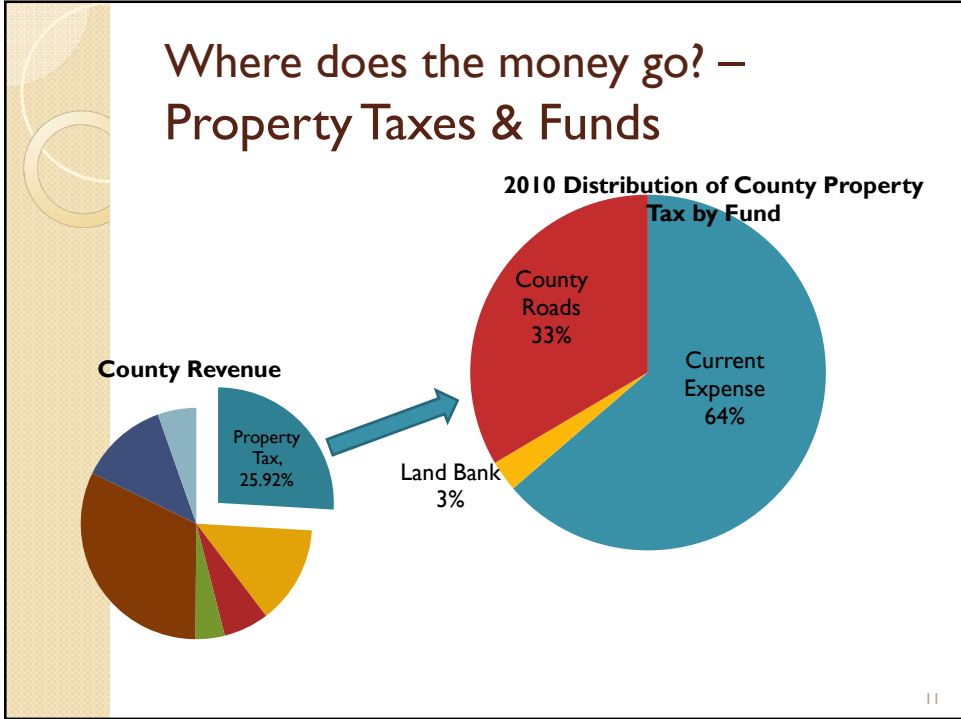
- Debt Service Funds: Set up to make long-term debt payments
 - Bond Redemption Fund
- Enterprise Funds: Funds intended to operate more or less independently, though independent operation is not required
 - Solid Waste Funds
 - Stormwater Utility Funds
- Internal Service Funds: Provide services to other funds, and costs are divided between served funds
 - Equipment Rental and Revolving Funds
 - Information Services Fund

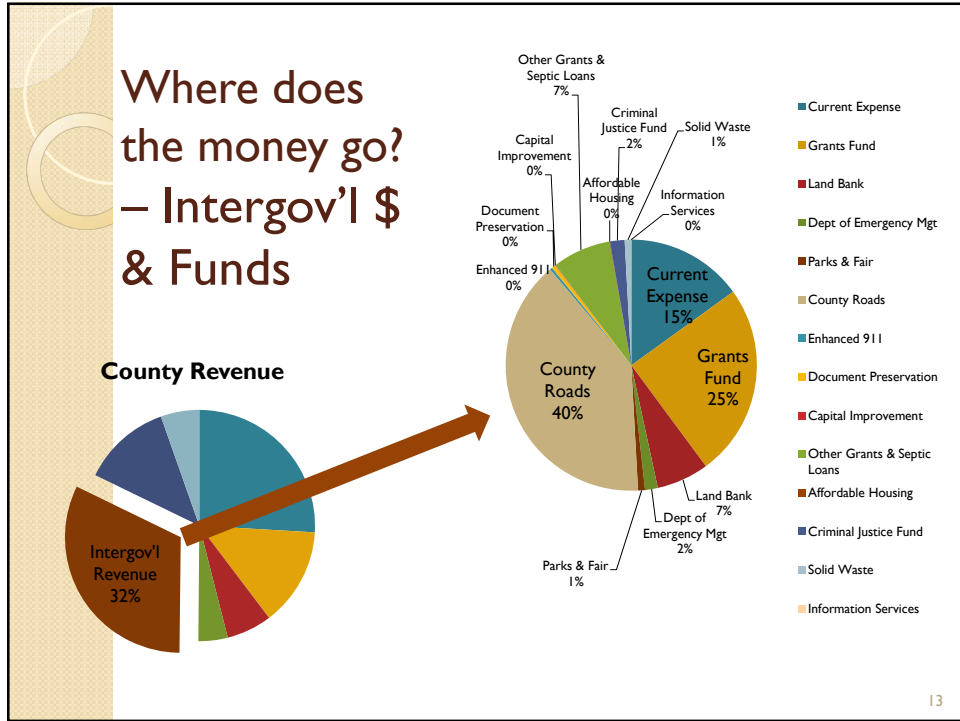
9

County Revenue by Fund



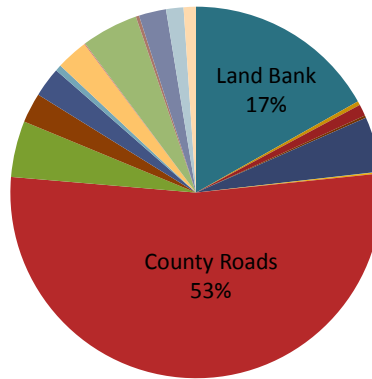
10





- ### All Special Revenues Funds
- Land Bank Land & Bank Stewardship
 - Noxious Weed Control
 - Veterans' Assistance
 - Dept of Emergency Mgt
 - San Juan County Parks
 - Tax Sale Expense Dog License
 - County Roads
 - Enhanced 911
 - Multipurpose Facilities Fund
 - Lodging Tax Fund
 - Auditor Document Preservation Fund
 - Capital Improvement Fund
 - Crime Victims Fund
 - Mental Health Tax Fund
 - Other Grants / Septic Loans Fund
 - Public Facilities Improvement Receiving
 - Affordable Housing Fund
 - Criminal Justice Receiving Fund

County Revenue to Special Revenue Funds, by Fund



15

Exceptions to Special Revenues

- Road Shift
 - Part of Roads property tax levy literally shifted to the general levy
 - Amount determined by local legislative body
 - Fairly arbitrary
 - Long-term and large shifts can threaten County's standing with County Road Advisory Board (CRAB)
- Road Diversion
 - Amount of Roads levy that can be used to support police patrol on roads
 - Annual report to justify amount is required

16

Shaw Island Playfield Status Report

We are in great shape!

Your interests have been represented by an enthusiastic, hard-working team which includes Jon Shannon (Project Manager), Lola Deane (Shaw Inc. President), Neil Bryant (Playfield Committee Chair), Cy Field (Trustee, Parks and Recreation), Alex MacLeod, Janice Ekstrom, Gib Black, Will Hamilton (Shaw School Board/Forester), Sharon Wooten, Keith Gerrard (Contracts), and Ron Woodard, (Shaw Inc. Board, Shaw School Board).

We want to acknowledge and offer grateful thanks to Hardy Schmidt for his time and advice.

We have funding in place to build the field.

We have a site that has been approved by the Parks and Recreation Board and the San Juan County Council.

We are practically finished with permitting.

Our final hurdle, the Hearing Examiner Review, is scheduled to be completed in December.

Tonight we are celebrating our success and kicking off our final Public Fund Raising campaign co-chaired by Stephanie Buffum, Jen Black, and Ron Woodard.

Shaw Island Playfield - November 6, 2011

1. Need: Background and Development
 - a. Shaw School - Years of study regarding playfield solution; teacher's house property too expensive to develop; Ellis field not well utilized - not appropriate for play; restrictions limit use.
 - b. 2008 - Study reviewed alternatives; community selects one to become Park Master Plan; plan includes enlarged playfield at east end of park and expanded campsite offerings; cost estimates developed; County Council approves plan.
 - c. Fall, 2010 - Discussion at Shaw Inc.'s annual meeting explores possibility of private funding of playfield as part of the Master Plan; multiple discussions regarding possibilities follow.
 - d. February, 2011- decision by Shaw Inc. to set up ad hoc committee to review playfield need and alternatives chaired by Neil Bryant; members include Lola Deane, Sharon Wooten, Cy Field, Keith Gerrard, Gib Black, Janice Ekstrom, Ron Woodard, Alex MacLeod; initial meetings indicate support for playfield; first job to review possible sites and define requirements; general consensus - San Juan County would not have adequate funding to implement Park Master Plan in foreseeable future.

RESULT - Playfield needed subject to community level of support

2. Site Selection:
 - a. Playfield committee reviews potential alternative sites; initial desire to have site out of park, close to school and already cleared; early conclusion reached that purchase of site out of reach financially; sites considered listed in Appendix A.
 - b. Park site determined to be only reasonable answer.
 - c. Master Plan park site problematic (inadequate size, inside 200' setback from shoreline, boggy).
 - d. Two sites on north side of county park evaluated; present site selected after weighing Master Plan, forestry considerations, drainage, and costs; see Appendix B for approved site plan; site presented on July 4.

RESULT – Site selected in July to be brought forward to community primarily through Shaw Inc.’s members’ vote to proceed

3. Fund Raising:

- a. Fund Raising Committee established June 24, 2011; members include MacLeod, Woodard, Bryant, Deane, Gerrard, Ekstrom, Field plus (?);
- b. Three-phase plan developed -
 - i. Shaw Inc. and school participation - now complete;
 - ii. “Quiet period” fund raising from private donors-80% complete;
 - iii. “Public Campaign” – STARTS TODAY!!!!

RESULT – Major funding in place to launch construction (approximately \$90,000); funds left to raise for maintenance, additional building (storage, performance), and possible additional toilet

4. Community Support:

- a. July 4 petition to gauge support; location of selected site presented; overwhelming support - 132 for, 3 against; against statements were (1) “I like park the way it is”, (2) “It should be at east end of park” and (3) “We don’t need it”.
- b. August 20 Shaw Inc. vote held to proceed with selected site and approve funding; overwhelming support again - 139 for, 6 against.

RESULT – Project launched with site-specific engineering, permitting, and approval expenditures approved.

5. Approvals and Permits:

- a. Extraordinary effort by Jon Shannon supported by Will Hamilton; all permitting completed for selected site; see Appendix C.

Note: Appendix D shows the original Master Plan

To: CD&P
P.O. Box 947
(135 Rhone Street)
Friday Harbor, WA 98250

October 11, 2011

Dear Planner,

I have two children going to Shaw School and another at Lopez High. I am a strong supporter of the soccer kids and the 4th of July softball game. But I do not support the play field at this proposed site.

My biggest objection to the new proposal is the lasting damage to the natural and wild feeling that still remains at South Beach. Even after all the development that has taken place over the years, the remaining unbroken strip of trees that hides and shelters the campsites and picnic area makes you feel like you have stepped into a tiny pocket of what it might have been like a thousand years ago. It is an illusion, of course. The forest is second or third growth. There are houses all around, and more coming. Even so, the feeling remains strong and good.

Cutting a huge swath of trees out of the park will damage this feeling, deeply. The proposed site cuts the current continuous band of trees into two tiny pieces, and adds a big parking lot. That is not what we need on Shaw.

What was voted on earlier by Shaw, Inc., was quite different. I assumed this project would be a small expansion and leveling of the current grassy field (that has been used for years for sports and running around).

I believe that the environmental impact of this new proposal needs to be examined closely and discussed by the people of Shaw.

I object to the lack of an environmental impact study.

Sincerely,

Jed Lengyel

P.O. Box 156, 73 Tolo Road
Shaw Island, WA 98286
Telephone: 360 468 3696
Email: Jerome_E_Lengyel@hotmail.com

**Shaw Island Subarea Plan, as amended
through Ordinance No. 21–2002, Dec. 3, 2002
Excerpts**

Here is the explicit exception that refers to school athletic fields (highlighting is mine):

Shaw Sub-Area Plan, Section 16.45.180.B.5: Policies

"Nothing in this subarea plan shall preclude the siting of an essential public facility as identified in the Comprehensive Plan (Section B.7 and Appendix 2) according to the procedures of SJCC 18.30.050(E)."

The Comprehensive Plan Section B.7 is just referred to for definitions:

"7.4.B.1. Public school facilities should be considered **essential public facilities.**"

"7.4.B.7.b (1) Purchasing additional acreage for new school facilities **and/or for new athletic fields;** "

Here is the County Park exception:

Shaw Sub-Area Plan, Section 16.45.180.C.2: Regulations

"County parks are not commercial uses and shall not be subject to the goals, policies, and regulations of this subarea plan. Any expansion, modification, or intensification of County parks shall be subject to the applicable provisions and permit requirements of SJCC Title 18 and Section B.3 of the Comprehensive Plan. The guidance of this subarea plan shall be considered when expanding their supportive capital facilities and services."

Here is the section in a table of (not) allowed permits referred to by the committee as not allowing an athletic playfield anywhere but on the county park:

Shaw Sub-Area Plan, Section 16.45.180 (C) "Unnamed recreational" Permits Allowed? No.

November 7, 2011

Dear Friends and Neighbors,

The play field committee is a good mix of islanders with different backgrounds, deep knowledge, and long experience. I believe the committee and the board are motivated by a desire to do what is best for all the island. I respect the hard work that they have done.

I have corresponded with several members of the playfield committee and am thankful for their time and their willingness to explain their thinking and process.

Now that we have a month before the final permit hearing, let's take a moment to think and ask the hard questions before we pass the point of no return. Does the location and scope of the planned playfield really make sense for all of the island? What about the long term consequences?

Here are a few specific concerns:

1. Confusion about Shaw Sub-Area Plan Restriction

Two-thirds of the committee members who responded to me (4 out of 6) brought up the sub-area plan restriction as a primary reason for limiting the site selection to just the county park. The letter sent to the islanders asking for approval presented the current site as the *only* possible site. But this seems to be a misreading of the sub-area plan (*please see attached excerpts*). In brief, the documents state that nothing in the plan shall apply to essential public facilities, which includes schools and associated athletic fields.

2. Better Sites Adjacent to School Not Pursued

A playfield adjacent to the school would eliminate the problems of transportation and greatly increase the value of the playfield for the ones who would most benefit: the island's children. Adjacent to the school also means we can reuse the existing public parking and toilet facilities for after-school and weekend use, which further reduces the initial cost, environmental impact, and long-term maintenance costs.

Some sites near the school were taken off the list because of concerns about conservation easements or farm zoning (and possibly due to the rumored sub-area plan restriction?) But this removal from the list was done without approaching the current owners and trustees. Let's at least ask the adjacent owners! And if purchase or trade is not possible, what about a long-term lease?

3. Existing Site at the County Park Not Pursued

An open field already exists at the county park. In voting for a playfield at the park, many people may have understood that it would be *this* site that would be expanded and improved with leveling and drainage for use as a playfield. Unfortunately, the letter sent to the islanders for approval did not include a map. This misunderstanding about expansion was printed in a recent issue of the *Shaw Times*, which is read fairly widely on the island. In reality, the existing site was removed from consideration for a playfield due to concerns about the shoreline buffer zone, even though this site has been in use for as long as anyone remembers.

4. Lack of Full Environmental Review

The county made an administrative decision that skips the requirement for a full environmental review. A key part of the environmental review process is questioning site selection. Why are we bypassing this important safeguard? For public lands we all hold in trust for the next generation, the requirements must be high.

5. Sunk Costs

The committee has already spent \$10k or so for permitting. That's a substantial expense, but it's still only 10-12% of the projected cost. If a better site becomes available, we should choose it. Development of an already clear and level site could potentially cost a lot less than the \$90k that the committee listed as the cost of new construction.

6. Town Hall Meeting

Saturday night's anniversary celebration for Shaw, Inc. was not a good venue for a vigorous debate on this subject. I repeat my call to discuss these issues at a town-hall meeting that includes all island residents.

We have to be certain that we are putting the playfield at the best place and not just the easiest or most expedient.

Sincerely,

Jed Lengyel